

Philips General Business Principles,



Quality integrity

I apply the **highest quality and integrity standards** to my work. I always act in compliance with laws and regulations and I **adhere** to the Philips Business System. When quality issues arise I **take action to improve**. I **speak up** when I observe non-compliance by others.

A handwritten signature in black ink, appearing to be 'F. A.' with a long horizontal stroke extending to the right.

8d` e hS` : agfW

1.1

1.2

1.3

1.4

2.1

89%

of employees
indicate that their
direct manager
is approachable
when facing
ethical dilemmas



2.2

2.3

2.4

2.5

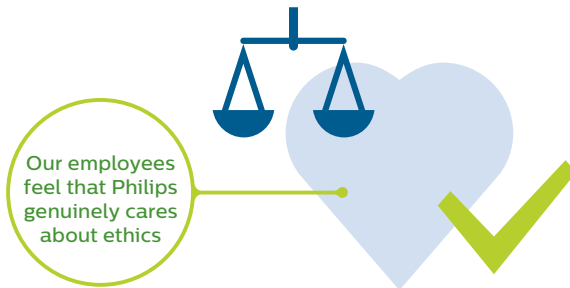
2.6

2.7

2.8

2.9

2.10



3.1

9 4B

86%
employees
think our rules,
procedures
and desired
behaviours
are clear



3.2

3.3

3.4

9 4B

Ž 9 4B
Ž
Ž
Ž
Ž
Ž

9 4B

9 4B

9 4B

9 4 B

9 4 B

9 4 B

9 4 B

9 4 B

9 4 B

9 4 B

9 4 B

9 4 B



intranet.philips.com